

Appendix B

Key Stakeholder Feedback - Planning for Indoor Facilities and Other Sport and Recreation Infrastructure Report

Capital Football

Re: the Future Indoor Sports Provision Feasibility Study

Capital Football supports the draft, in particular the identified need for a futsal facility in the North.

In saying that, Capital Football notes that there remains a need for futsal facilities in the South following the closure of the M-Power dome and growth of communities resulting from residential development in and adjacent to Woden Valley and Weston Creek.

Regards,
Phil Brown
CEO
Capital Football

3 December 2018

Gymnastics

Dear Simon

30 November 2018

Thank you for your time on Tuesday 27 November to meet with Gymnastics ACT (GACT) President Andrew Bewick and Gymnastics Australia (GA) and ACT CEO Kitty Chiller to discuss the *Planning for Indoor Facilities and other Sport and Recreation Infrastructure Feasibility Study*.

Gymnastics ACT would like to clarify that Gymnastics Australia High Performance Men's program remains committed to the current AIS site through 2020 and the lead up to the Tokyo Olympics. GA then is open to exploring other options post this date and would appreciate being kept informed of this feasibility study.

GACT remains committed to establishing a State Gymnastics Centre and fully support the proposal to investigate opportunities with Canberra City Gymnastics Club and also support the recommendation to investigate the University of Canberra as the preferred site for the facility.

Kind Regards,

Luke Gaetani

State Administration Manager

BASKETBALL ACT

Basketball ACT - Current status on the development of Block 16 Belconnen

Optium Report - Revised Inclusion:

5.1.1 Basketball

Basketball ACT has 8,809 active playing members (2017 figures) representing a growth of 21% in the last three (3) years. The existing courts at Belconnen Basketball Stadium are at capacity during week days and weekends, and the Association utilises indoor courts at twelve (12) other school/ University or privately owned venues, primarily for training activities. Access to these external courts is constrained by their shared use with other sports or unavailability, often at short notice.

A potential development option being considered by Basketball ACT is an expansion of their 4-court facility at Belconnen Basketball Stadium to conduct recreational competitions and increased levels of club training (currently undertaken at external venues). Other, broader partnership options (Tuggeranong, Woden, Stirling and Gungahlin), are also being considered.

From information supplied by Basketball ACT, while the highest proportion of their members reside in the northern suburbs, the Belconnen facility services a whole of city catchment and beyond (as does the Southern Cross Stadium in Tuggeranong) with high participation rates across all regions, including Queanbeyan (refer Appendix A). If developed, the expanded facility would free up existing school facilities used by Basketball ACT for other, smaller indoor sports in the short to medium term (4-6 years).

Basketball ACT indicated that the proposed timeframe to consider any future expansion at Belconnen would likely be 4+ years once it has improved its current financial position. Basketball ACT acknowledges that the earlier vision of a 3 court Centre of Excellence seating 1,000, with associated administrative and training facilities, (costed at \$7.4 million - 2013 prices) is beyond their reach and that any future upgrade at Belconnen will need to be delivered in partnership.

In any development scenario Basketball ACT expects to have the capacity to meet some of the capital cost (cash and borrowings) but unless cost effective solutions involving community or commercial partners arise, any option will require a substantial direct cash contribution from the ACT Government. Under the terms of the adjoining Belconnen Block.16 lease, any commercial partnership will need to be agreed to by the ACT Government.

Yours sincerely



Michael Haynes

Chief Executive || Basketball ACT

Tel: +61 414 835 414

Em: michael.haynes@basketballact.com.au

(02) 6253 3066 // MICHAEL.HAYNES@BASKETBALLACT.COM.AU
BELCONNEN BASKETBALL & SPORTS CENTRE, 42 OATLEY COURT BELCONNEN ACT 2617

BASKETBALLACT.COM.AU

Dolejsi, Simon

From: Chair BCC <chair@belcouncil.org.au>
Sent: Friday, 30 November 2018 7:47 AM
To: Dolejsi, Simon
Subject: Re: FW: Future Indoor Sports Provision Feasibility Study - Final Draft
[SEC=UNCLASSIFIED, DLM=For-Official-Use-Only]
Attachments: image002.png

Hi Simon,

Apologies for the delay in getting back to you.

Can I say how pleased I am with the tone of the report and the inclusion of all our concerns/feedback. The Belconnen district will continue to be the leading area for Canberrans to live, work and play, so real and genuine consideration of facilities that maintains our reputation as the "Jewel in Canberra's Crown" is paramount in our planning for the future.

Thank you for your effort with this body of work and we look forward to working with the Minister for Sport and the Directorates delivering this vision in the months to come.

Regards

Glen Hyde
Chair
Belconnen Community Council

web.facebook.com/belcouncil | Ph: 0433 176 662

Dolejsi, Simon

From: Peter Elford <president@gcc.asn.au>
Sent: Friday, 30 November 2018 4:28 PM
To: Dolejsi, Simon
Cc: 'David Mason'
Subject: RE: Indoor Sports Facility Study [SEC=UNCLASSIFIED,DLM=For-Official-Use-Only]

Follow Up Flag: Follow up
Flag Status: Flagged

Dear Simon

Thank you for the opportunity to comment on the DRAFT Future Indoor Sports Provision Feasibility Study. Overall, the Gungahlin Community Council (GCC) believes the feedback we provided during the consultation is reflected in the study. Specifically:

- The study clearly outlines the concerns conveyed by the GCC in regards to lack of available indoor sports facilities in Gungahlin.
- The study acknowledged the very high growth rate that is present in the Gungahlin region (growth projection of approximately 27,000 people between 2017-2026).
- The study noted the GCC's view that there is a lack of sporting and recreational opportunities for the very large cohort of young people within Gungahlin and the need for investments in a range of sporting and recreational facilities including an easily accessible, multi-purpose indoor sport and recreation facility (but see also below)
- The study acknowledges from the 2015 ACT Indoor Facility Study that there is an under supply of multi-use or purpose-built indoor sporting facilities.
- The study identified that whilst master planning by government agencies includes provision for open space land for sport and recreation purposes the land is not always fit-for-purpose or sufficient in size. It states that "often a generic allocation of land for sport and recreation is made without a clear understanding of the area needed, the purpose for which it is to be used, and its suitability".

However we note that the consultation undertaken as part of the study was quite narrow, as it only sought comment from the three relevant community councils, which have limited capacity and expertise, and the peak bodies of the three specific sports identified. The lack of an open public consultation is particularly concerning. The consequences of this appear to be that the study's recommendations are centred on establishing/expanding "peak" facilities for the three specific sports, and not on addressing the overall needs of the Gungahlin region (or for that matter, the Belconnen or Woden/Weston Creek regions). Other sports and activities are largely excluded from the study and hence so is the opportunity to establish multi-use facilities that have the potential to have broader overall impact (and perhaps scale).

If a "regional perspective" could be incorporated this would in the GCC's opinion, improve the document.

Regards

Peter Elford
President, GCC

Ms Yvette Berry MLA
Member for Ginninderra
Legislative Assembly for the ACT
GPO Box 1020
CANBERRA ACT 2601

Dear Minister

Re Planning for Indoor Facilities and Other Sport and Recreation Infrastructure (Report)

The Woden Valley Community Council is writing to express our serious concerns about the evidence base, assumptions, findings and consultation process for this Report. We strongly object to the flawed population forecasts and economic rationale used to recommend more dedicated, single-sport facilities in the north of Canberra rather than expanded access to indoor multi-use facilities for more local sports and residents in Canberra's south.

We note that the Report does not address the policy intent of the 2016 Parliamentary Agreement between Labor and the Greens to undertake feasibility studies into the construction of two multi-purpose indoor sports centres in Woden and Gungahlin.

From a policy perspective, the Report does not contribute to the Woden Town Centre's inclusion to the ACT Government's Active Living policy and vision for Canberra to be a healthy, active, vibrant city that is well connected, compact and equitable.

The Report is not consistent with one of the key principles of the National Capital Plan (NCP) for each town to have a centre acting as a focal point for higher order retail functions, commercial services, offices and community facilities and that the continued expansion of services and facilities should be provided for and encouraged in each of the town centres. See **Attachment A**.

Nor does the Report meet the object of the Territory Plan to ensure, in a manner not inconsistent with the NCP, the planning and development of the ACT provides an attractive, safe and efficient environment in which to live, work and undertake recreation. The Standing Committee on Planning and Urban Renewal's December 2017 report into the *Draft Variation to the Territory Plan Number 344 Woden Town Centre* also recommended the provision of recreation facilities in Woden.

Similarly, we do not believe the Report meets the Directions in the recently released *ACT Planning Strategy 2018* to deliver social infrastructure that meets community needs and supports strong communities (4.1) and to deliver recreation, open (green) space and public spaces that support social interaction, physical and mental health and engagement in public life (4.2).

Notwithstanding the ACT Government's policies and the 2015 ACT Indoor Sports Facilities Study which found (with the closure of the Woden Basketball Stadium and CIT) that there is a shortage of indoor sports facilities, the Report does not consider the social and physical needs for access to indoor sports facilities in the south of Canberra. See map at **Attachment B**.

The Woden Town Centre is on the north south, east west public transport alignment making it accessible by public transport from across Canberra. Locating facilities in the town centres provides wider economic benefits by bringing people together which reduces social isolation and supports small business. We do not support the recommendation that it is economically efficient to use schools for the needs of our sporting groups in the south. Juggling administration, sporting equipment and safety of the participants across multiple locations creates hardship and our sporting groups are losing participants due to the difficulty in securing appropriate accommodation.

Dedicated facilities such as the cricket facility at the Phillip Oval and Woden Park (athletics) are terrific assets for the broader community, however, given Canberra's cold climate, they do not negate the need for a multi-purpose indoor sports hall in Woden to support a spectrum of sports. Currently residents living in the south of Canberra are travelling north for recreation, particularly between 4pm to 10pm adding to traffic congestion.

The population forecasts in the Report are not accurate and misleading. Current population forecasts in the *ACT Planning Strategy 2018* are Woden (49,200), Weston Creek (33,200), Molonglo (51,400) and South Canberra (40,300) bringing the catchment for the Woden Town Centre to 174,100 people by 2041. We also reject the notion that Woden's median age negates the need for a multi-purpose sports hall because all ages require access to recreation facilities.

We are very concerned about the lack of consultation and request that the draft report be publicly released to seek feedback from the community. The delivery of new sporting facilities is a major issue for the community and it is not appropriate for three Community Councils and the peak sporting bodies that are the subject of the report to be the sole groups consulted.

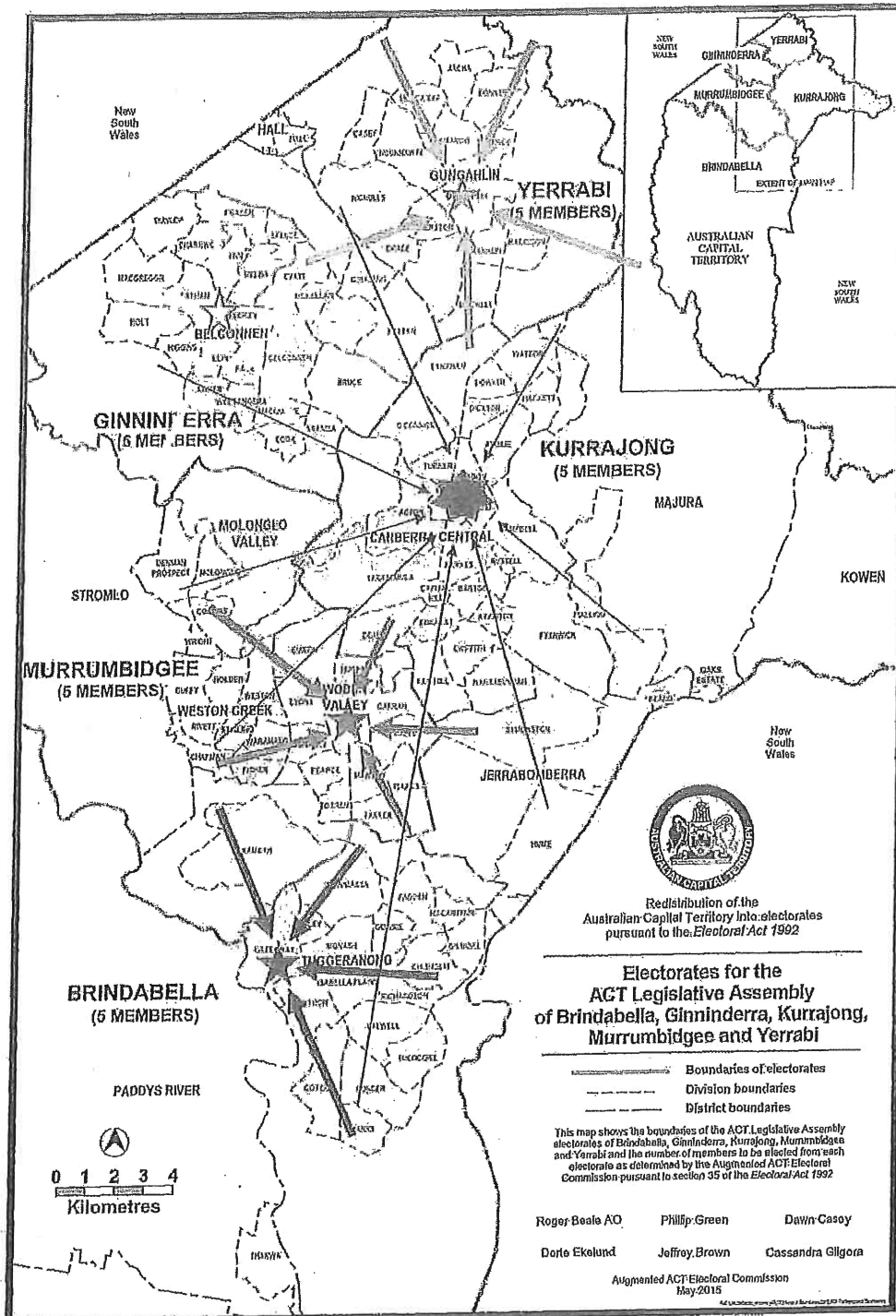
Finally, the sporting groups in the south have told the WVCC that the supply of indoor sports facilities does not meet their demand. We would appreciate the opportunity to meet with you to discuss the significant health and social inclusion benefits of a multi-purpose sports hall in Woden. We also invite you to our public meeting on 6 February 2019 to hear the views, and discuss the issue with the community. I can be contacted on 0420 533 809 or at president@wvcc.org.au.

Yours sincerely

Ms Fiona Carrick
President
Woden Valley
Community Council

Attachment A

The National Capital Plan's urban hierarchy of the city and the town centres for the provision of services and facilities to create active hubs.



The location of current indoor sports facilities
(excluding cricket and racquet sports)

